

# MATERIALI E FINITURE

MATERIALS AND FINISHES | MATÉRIAUX ET FINITIONS | WERKSTOFFEN UND AUSFÜHRUNGEN

## Colori Laccati | Lacquered colours | Couleurs laquées | Lackierte Farben

### cat. F1

#### Laccato OPACO

MATT lacquered  
Laqué MAT  
MATT lackiert

### cat. F2

#### Laccato LUCIDO

GLOSSY lacquered  
Laqué BRILLANT  
HOCHGLANZ lackiert

					
<b>60</b> BIANCO	<b>42</b> LATTE NCS S 0502-G50Y	<b>01</b> NUDE NCS S 1002-Y	<b>02</b> ROYAL NCS S 2002-Y	<b>13</b> ELEGANT GREY NCS S 4500-N	<b>16</b> DEEP GREY NCS S 7500-N
					
<b>40</b> URBAN NCS S 8000-N	<b>59</b> NERO NCS S 9000-N	<b>0A</b> POWDER NCS S 0804-Y30R	<b>26</b> AUTUMN BEIGE NCS S 1505-Y30R	<b>03</b> NATURE NCS S 4005-Y20R	<b>05</b> WILD NCS S 6005-Y20R
					
<b>0F</b> ROMAN NCS S 6005-Y80R	<b>06</b> DIVA NCS S 7005-Y80R	<b>0U</b> MOCHA NCS S 8502-R	<b>04</b> COOKIE NCS S 2005-Y50R	<b>0E</b> BISCUIT NCS S 2010-Y60R	<b>0B</b> SAND NCS S1005-Y70R
					
<b>1H</b> MALVA NCS S 1515-Y90R	<b>1E</b> STAR DUST NCS S 3030-Y90R	<b>1C</b> MERLOT NCS S 5030-R10B	<b>1J</b> PARTY GIRL NCS S 1060-R20B	<b>1P</b> OLD PURPLE NCS S 6020-R50B	<b>1L</b> GLICINE NCS S 1040-R60B
					
<b>1D</b> BLUE TREND NCS S 3050-R80B	<b>0Q</b> OCEAN NCS S 6020-R90B	<b>0V</b> DENIM NCS S 8010-R70B	<b>0S</b> BAMBOU NCS S 7010-B50G	<b>1F</b> HUNTER NCS S 5020-G50Y	<b>0K</b> PISTACHO NCS S 4020-G50Y
					
<b>1B</b> SAGE NCS S 3005-G20Y	<b>1G</b> SKY NCS S 0510-B10G	<b>0C</b> SLATE NCS S 1502-B	<b>07</b> FANCY NCS S 2002-R50B	<b>0M</b> VENETIAN NCS S 3010-B30G	<b>0N</b> CYPRUS NCS S 4020-B50G
					
<b>0P</b> TURQUOISE NCS S 4040-B20G	<b>0R</b> EUCALYPTUS NCS S 5540-B30G	<b>0G</b> EARTH NCS S 3010-Y30R	<b>1M</b> AMARETTO NCS S 3020-Y30R	<b>1N</b> SOFT GOLDEN NCS S 2030-Y20R	<b>08</b> PRINCESS NCS S 0530-Y10R
					
<b>1K</b> AMALFI NCS S 0580-Y	<b>1A</b> APRICOT NCS S 1040-Y50R	<b>1O</b> IMPRUNETA NCS S 3030-Y50R	<b>0I</b> HAVANA NCS S 3040-Y70R	<b>11</b> ROCK NCS S 2060-Y40R	<b>18</b> MASSAI NCS S 1580-R

#### ATTENZIONE

Gli stessi colori applicati a materiali diversi possono subire leggere variazioni cromatiche.

#### NOTE

Colours can incur slight chromatic changes if applied to different materials.

#### ATTENTION

Les mêmes couleurs appliquées à différents matériaux peuvent subir de légères variations chromatiques.

#### ANMERKUNG

Bei der Anwendung auf unterschiedlichen Materialien kann es bei Farben zu leichten Farbveränderungen kommen.

# MATERIALI E FINITURE

MATERIALS AND FINISHES | MATÉRIAUX ET FINITIONS | WERKSTOFFEN UND AUSFÜHRUNGEN

Finiture Nobilitato | Melamine finishes | Finitions Mèlaminés | Melaminholz

## cat. F3

### Nobilitato LEGNO

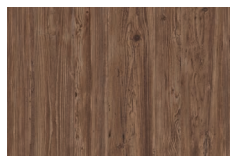
WOOD Melamine

Mèlaminé BOIS

HOLZ Melamin



12W  
ABETE BIANCO



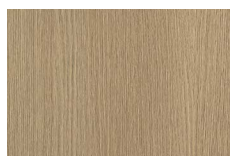
14W  
ABETE BROWN



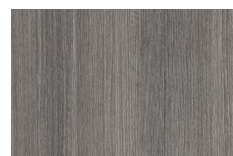
26W  
ABETE ROCCIA



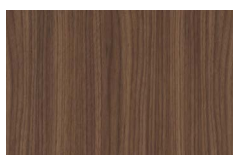
27W  
ABETE FONDENTE



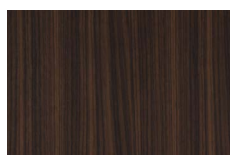
35W  
ROVERE NATURAL



36W  
JATOBA SABLÉ



37W  
NOCE ROYAL



38W  
NOCE POMPEI

## cat. F3

### Nobilitato ALTATTO

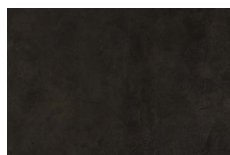
ALTATTO Melamine

Mèlaminé ALTATTO

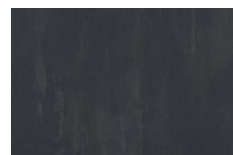
ALTATTO Melamin



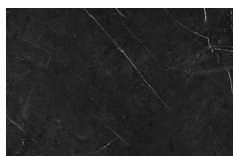
01I  
LUNARE



02I  
BIOTITE



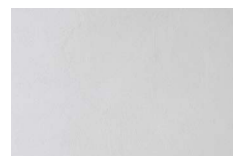
03I  
GENESI



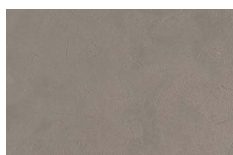
04I  
MARKINA



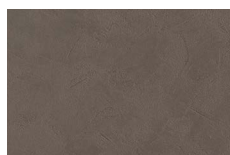
05I  
TORANO



06I  
SOLID ASH



07I  
SOLID FOG



08I  
SOLID CLAY

# MATERIALI E FINITURE

MATERIALS AND FINISHES | MATÉRIAUX ET FINITIONS | WERKSTOFFEN UND AUSFÜHRUNGEN

## Ceramica | Ceramic | Céramique | Keramik

Nel listino prezzi, le finiture delle consolle in ceramica, sono suddivise in due fasce.

Fascia 1:

- Bianco LUCIDO

Fascia 2:

- Bianco OPACO

- Colore OPACO/LUCIDO

In this price list the finishes for ceramic washbasin consoles are split in 2 price ranges.

Range 1:

- White GLOSSY

Range 2:

- White MATT

- Colour MATT/GLOSSY

Dans Le tarif, les finitions des consoles en céramique, sont divisées en deux tranches.

Tranche 1 :

- Blanc BRILLANT

Tranche 2 :

- Blanc MAT

- Couleur MAT/BRILLANT

In dieser Preisliste werden Ausführungen der Konsolen aus Keramik in 2 Preisklassen aufgeteilt.

Klasse 1:

- Weiß HOCHGLANZ

Klasse 2:

- Weiß MATT

- Farbig MATT/HOCHGLANZ

### Fascia di prezzo 1

Price range 1

Tranche de prix 1

Preisklasse 1



**CERBIA**  
BIANCO LUCIDO

### Fascia di prezzo 2

Price range 2

Tranche de prix 2

Preisklasse 2



**CERBIO**  
BIANCO OPACO



**CERC02**  
POLVERE OPACO



**CERC03**  
CRETA OPACO



**CERC04**  
MALTA OPACO



**CERC05**  
ANTRACITE OPACO



**CERC06**  
COBALTO LUCIDO



**CERC07**  
MUSTARD LUCIDO



**CERC08**  
GRANATO LUCIDO



**CERC09**  
PAVONE LUCIDO

#### ATTENZIONE

Le misure degli articoli ceramici sono sottoposte a leggere variazioni e devono intendersi come approssimative.

#### NOTE

The size of the ceramic items are subject to slight variations and they must be read as approximates.

#### ATTENTION

Les mesures des articles en céramique sont soumises à de légères variations et sont considérées comme approximatives.

#### ANMERKUNG

Die Größe der Keramikartikel unterliegt geringfügigen Schwankungen und muss als Näherungswerte betrachtet werden.



#### Tabella tolleranze

Tolerance table

Tableau tolérances

Toleranzwerte

# MATERIALI E FINITURE

MATERIALS AND FINISHES | MATÉRIAUX ET FINITIONS | WERKSTOFFEN UND AUSFÜHRUNGEN

## Castmarble

Nel listino prezzi, le finiture delle consolle in Castmarble, sono suddivise in due fasce.

Fascia 1:

- Bianco OPACO/LUCIDO

Fascia 2:

- Colore OPACO

In this price list the finishes for washbasin Castmarble consoles are split in 2 price ranges.

Range 1:

- White MATT/GLOSSY

Range 2:

- White MATT  
- MATT Colour

Dans le tarif, les finitions des consoles de Castmarble, sont divisées en deux tranches.

Tranche 1 :

- Blanc MAT/BRILLANT

tranche 2 :

- Couleur MAT

In dieser Preisliste werden die Konsolen aus Castmarble in 2 Preisklassen aufgeteilt.

Klasse 1:

- Weiß MATT/HOCHGLANZ

Klasse 2:

- Weiß MATT  
- Farbig MATT

### Fascia di prezzo 1

Price range 1

Tranche de prix 1

Preisklasse 1



CASBIO  
BIANCO OPACO



CASBIA  
BIANCO LUCIDO

### Fascia di prezzo 2

Price range 2

Tranche de prix 2

Preisklasse 2

#### ATTENZIONE

Il colore della superficie della consolle in Castmarble è ottenuto per gelcoattatura con l'impiego dei colori TDA.

#### NOTE

The TDA colour for Castmarble consoles is obtained by gelcoating.

#### ATTENTION

La couleur de la surface de la consolle en Castmarble est obtenue par gélification avec l'utilisation des couleurs TDA.

#### ANMERKUNG

Die TDA Farbe für die Konsolen aus Castmarble wird durch Gelcoating hergestellt.

					
	42 LATTE	01 NUDE	02 ROYAL	13 ELEGANT GREY	16 DEEP GREY
					
40 URBAN	59 NERO	0A POWDER	26 AUTUMN BEIGE	03 NATURE	05 WILD
					
0F ROMAN	06 DIVA	0U MOCHA	04 COOKIE	0E BISCUIT	0B SAND
					
1H MALVA	1E STAR DUST	1C MERLOT	1J PARTY GIRL	1P OLD PURPLE	1L GLICINE
					
1D BLUE TREND	0Q OCEAN	0V DENIM	0S BAMBOU	1F HUNTER	0K PISTACHO
					
1B SAGE	1G SKY	0C SLATE	07 FANCY	0M VENETIAN	0N CYPRUS
					
0P TURQUOISE	0R EUCALYPTUS	0G EARTH	1M AMARETTO	1N SOFT GOLDEN	08 PRINCESS
					
1K AMALFI	1A APRICOT	1O IMPRUNETA	0I HAVANA	11 ROCK	18 MASSAI

# MATERIALI E FINITURE

MATERIALS AND FINISHES | MATÉRIAUX ET FINITIONS | WERKSTOFFEN UND AUSFÜHRUNGEN

Le maniglie FILO, PONTE, TALETE e GOLA, sono sempre laccate dello stesso colore Opaco/Lucido del frontale. Per i frontali in Nobilitato LEGNO e ALTATTO seguono il colore Opaco come riportato nella tabella a fianco.









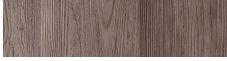























The handles mod. FILO, PONTE, TALETE and GOLA are always lacquered the same colour Matt/Glossy as the fronts. For the fronts in Melamine WOOD and ALTATTO material finishes refer to the colours given in the adjacent table.

Les poignées FILO, PONTE, TALETE et GOLA sont toujours laquées de la même couleur Mat/Brillant que la façade. Pour les façades Mélangé BOIS et ALTATTO, suivre les couleurs indiquées dans le tableau à côté.

Die Griffe Mod. FILO, PONTE, TALETE und GOLA werden in der gleichen Farbe Matt/Hochglanz der Frontplatte ausgeführt. Für alle Frontplatten aus beschichtetem HOLZ und ALTATTO auf der nebenstehenden Tabelle verweisen.

## Abbinamenti | Combinations | Assortiments | Farbkombinationen

Finiture Nobilitato | Melamine wood | Finitions Mèlaminés | Beschichtetes Holz

			
<b>12W</b> ABETE BIANCO	<b>01</b> NUDE NCS S 1002-Y	<b>01I</b> LUNARE	<b>13</b> ELEGANT GREY NCS S 4500-N
			
<b>14W</b> ABETE BROWN	<b>1M</b> AMARETTO NCS S 3020-Y30R	<b>02I</b> BIOTITE	<b>0U</b> MOCHA NCS S 8502-R
			
<b>26W</b> ABETE ROCCIA	<b>05</b> WILD NCS S 6005-Y20R	<b>03I</b> GENESI	<b>16</b> DEEP GREY NCS S 7500-N
			
<b>27W</b> ABETE FONDENTE	<b>0U</b> MOCHA NCS S 8502-R	<b>04I</b> MARKINA	<b>40</b> URBAN NCS S 8000-N
			
<b>35W</b> ROVERE NATURAL	<b>1N</b> SOFT GOLDEN NCS S 2030-Y20R	<b>05I</b> TORANO	<b>01</b> NUDE NCS S 1002-Y
			
<b>36W</b> JATOBA SABLÉ	<b>05</b> WILD NCS S 6005-Y20R	<b>06I</b> SOLID ASH	<b>01</b> NUDE NCS S 1002-Y
			
<b>37W</b> NOCE ROYAL	<b>06</b> DIVA NCS S 7005-Y80R	<b>07I</b> SOLID FOG	<b>02</b> ROYAL NCS S 2002-Y
			
<b>38W</b> NOCE POMPEI	<b>0U</b> MOCHA NCS S 8502-R	<b>08I</b> SOLID CLAY	<b>0F</b> ROMAN NCS S 6005-Y80R

Le consolle in Ceramica hanno un colore analogo, Opaco o Lucido, nella cartella Colour trends di TDA.

Ceramic consoles have a similar colour, Matt or Glossy as per the TDA chart Colour trends.

Les consoles en Céramique ont une couleur analogue, Mat ou Brillant, dans le nuancier Colour trends de TDA.

Die Keramikkonsolen haben eine ähnliche Farbe Matt/Hochglanz laut der TDA Farbkarte Colour trends.

## Analogie | Similarities | Analogies | Ähnlichkeiten

Ceramica | Ceramic | Céramique | Keramik

			
<b>CERC02</b> POLVERE OPACO	<b>02</b> ROYAL NCS S 2002-Y	<b>CERC06</b> COBALTO LUCIDO	<b>0Q</b> OCEAN NCS S 6020-R90B
			
<b>CERC03</b> CRETA OPACO	<b>03</b> NATURE NCS S 4005-Y20R	<b>CERC07</b> MUSTARD LUCIDO	<b>1K</b> AMALFI NCS S 0580-Y
			
<b>CERC04</b> MALTA OPACO	<b>0F</b> ROMAN NCS S 6005-Y80R	<b>CERC08</b> GRANATO LUCIDO	<b>1C</b> MERLOT NCS S 5030-R10B
			
<b>CERC05</b> ANTRACITE OPACO	<b>16</b> DEEP GREY NCS S 7500-N	<b>CERC09</b> PAVONE LUCIDO	<b>0S</b> BAMBOU NCS S 7010-B50G